

AUSTIN

DUAL MOTOR LIFT CHAIR



- Small/Medium size chair
- Dual motor
- Leg extension and reclining mechanism independent

- Firm seating
- Five button hand control operation
- Battery back up in case of power failure

PRODUCT DETAILS

Size Classification	Small/Medium
Weight Capacity	145kg
Total Chair Height	1100mm
Total Chair Width	770mm
Seat Depth	500mm
Chair in Full Recline (lying flat & footrest extended)	1630mm

WARRANTY*

Frame	10 Years
Foam	5 Years
Mechanism	5 Years
Power/Electrics and Cover	2 Years



RECLINE FUNCTIONALITY



Seat Angle Raised	167°
Back Angle Closed	117°
Back Angle Reclined	160°

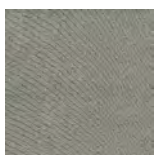
CUSTOMISE YOUR LIFT CHAIR

Colour may vary from picture. Please refer to physical colour swatch.

WARWICK FABRIC

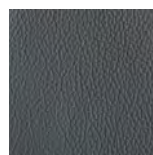


Manisa Thunder

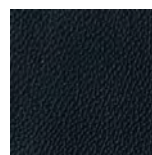


Manisa Fossil

LEATHER



Dark Grey



Black